



IP access control

IPEVIA SECUR: A SOLUTION COMBINING SIMPLICITY WITH PERFORMANCE

ipevia
BY CASTEL

Easy to use, modular, evolutive and performing the IPEVIA SECUR solution has been designed for the shops, small and medium sizes companies, offices... aimed at meeting their essential needs and challenges.

Its intuitive and ergonomic software has been developed to allow quick and simple operation, while offering extensive configuration possibilities.



MAIN APPLICATIONS

SMEs, SMI, liberal professions, retail, banks, insurance, retirement homes, office accesses, coworking, public authorities, sports facilities, schools, etc., and many other possible and customised applications.



- > 4 reader central, entry/exit modules
- > Access control for up to 100,000 users per site and 1,000 access profiles per central
- > Visitor management, booking of rooms, employee portal
- > Up to 12 entries / exits by adding an add-on module
- > Up to 220 entries / exits per central via RS485 add-on modules
- > Impedance or on/off inputs (NO / NC configurable)
- > 24V 2A dry contact outputs (C, NO, NC, software reversible)
- > Unlimited number of doors per site / 384 doors per network
- > Permanent / temporary access profiles, secure access in time slot (badge + code or presence of a responsible person)
- > Time management on badges, doors, readers, exits, public holidays and building work Lift management (up to 110 floors)
- > Single entry: anti-passback, anti-timeback
- > Overall tally and/or by company, access profile, user
- > Automatic search of centrals
- > Management of software permission levels
- > Native interfacing with the MEDEA anti-intrusion system

IP

RS 485
IP

Secure
protocol

QR Code, license plate recognition (LPR),
radio long distance, bi-technology

Proximity readers:
13.56 MHz Mifare and Bluetooth

Management of 4 to 6
per central

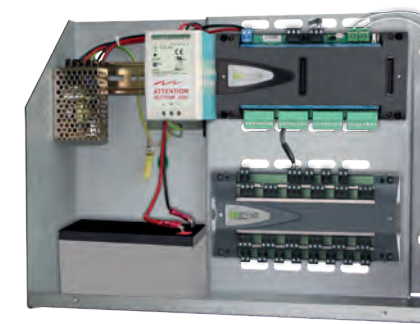
Compatible with XELLIP intercom range

Downloadable software
or Cloud mode

Multi-user

Multi-site

Multi-company



Integration box for easy installation



IPEVIA Manager software

MAIN BENEFITS

A simple, effective and complete solution

IPEVIA SECUR 4L central and the IPEVIA Manager software have been designed to make them easy to use. The solution is for everyone, from the beginner user to the access control professional.

It adapts to your needs and has all the necessary features to manage and secure your buildings: access control, visitor management, booking of rooms, employee portal, anti-intrusion, Ten' Up tennis booking, lift management, video control, etc.

An IP-based solution

For extra performance, the centrals are IP-native, enabling fast data transfer, intercommunication between centrals, and remote management. The centrals also have PoE power. Use of existing IP infrastructure allows installation at no significant additional cost.

Increased security

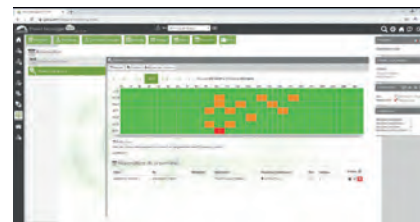
The IPEVIA SECUR solution provides secure access management, with the AES 128-bit encryption algorithm securing data exchanges between the badge and the reader, and a secure 2-wire RS485 link between the reader and the central.

Associated with the Mifare Plus range of upgradeable security readers, the information on the badge is protected, providing optimum protection for your access and data.

A multi-company, multi-site solution

Advanced management of the software use rights allows different companies to use IPEVIA on the same site (e.g. offices on different floors).

The solution's IP architecture also allows multi-site management (chain stores, etc.).



Booking and planning module
IPEVIA Manager software

Interfacing with MEDEA anti-intrusion system

To provide a global security solution, IPEVIA SECUR interfaces natively with the MEDEA multifunction hybrid anti-intrusion system.

With a powerful processor and advanced software, MEDEA is a native IP system offering innovative operational capacity and flexibility.

MEDEA's range and integration with building automation, BMS/CTM and video surveillance make it the ideal solution for security in commercial and industrial buildings.

A reliable, multi-technology solution

CASTEL's industrial experience as a manufacturer of access control solutions (readers, centrals, software, etc.) is your guarantee of reliable equipment. IPEVIA remains an open solution and is designed to be compatible with all Wiegand readers on the market.

A modular and scalable solution

IPEVIA's modular design adapts to all types of buildings. Regardless of the size of the site when installed, from the point of view of size or features, IPEVIA is always ready to become more powerful when you need it.



DOWNLOADABLE OR CLOUD-BASED SOFTWARE

Based on a secure web architecture (client/server), IPEVIA Manager software can be installed on a computer or server to allow remote use of the software by different users.

It is also available in a cloud version (hosted server) at www.ipevia.com

Cloud mode with automatic backup enables real-time system updates and makes handling easier for maintenance.

Two solutions are available for connecting the central to the server or computer on which IPEVIA Manager is installed: via USB or ethernet.

INTUITIVE AND LOGICAL SET-UP AND USE

IPEVIA Manager uses an internet browser and offers a simple and intuitive interface and menus, improving your navigation of the software. Step by step, you will be guided by the set-up wizard. Create your site in 8 steps and start opening doors with the programmed identification badges.



ADVANCED MANAGEMENT OF SOFTWARE USE RIGHTS

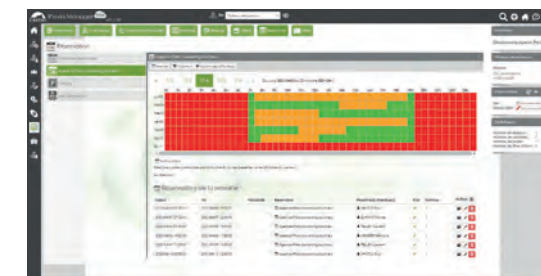
Four levels of software access are available by default. Administrator, installer, caretaker and security guard have different rights.

You can also create others according to your needs.

OPTIMISED MANAGEMENT OF ACCESSES, VISITORS, BOOKING OF ROOMS

IPEVIA Manager includes everything you need to manage and secure your buildings. The flexibility of software permissions simplifies programming of user access rights.

You can create groups and profiles for access to doors, areas, and lifts, with optimised management of time slots, public holidays, leave and building work. IPEVIA Manager also has features such as visitor management or online booking of meeting rooms, co-working, sports facilities, etc.



COMPLETE MONITORING OF YOUR INSTALLATION AND EVENTS

IPEVIA Manager offers you the ability to view the status of the centrals and the entry/exit modules to warn of unusual system behaviour. You also have access to manual controls for remote control of doors, floors, etc.

You can view the events in real time (door access, door left open, door forced, etc.) and create customised reports (presence on site, etc.).

Powerful configuration tools and features that adapt to your needs

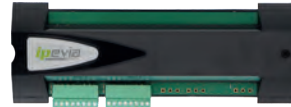


CENTRAL AND ADDITIONAL MODULES



IPEVIA SECUR 4L
Central IP for 4 readers
REF 160.0700

- > Connection of 4 readers and/or keyboards
- > Can be mounted on a Din rail (or box)
- > Administered by html pages (communication with IPEVIA Manager via USB or IP)
- > Management by reader of 1 exit PB, 1 door contact, 1 24V/2A relay
- > Secure RS485 bus between central and add-on entry/exit modules (up to 10 modules per central)
- > Central cover opening contact and metal box opening and anti-tamper contact
- > Power supply 12V (or optional external)
- > • H 90 mm x W 200 mm x D 34 mm
- > • H 145 mm x W 210 mm x D 65 mm (with cover)



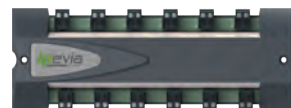
IPEVIA SECUR 5/6L
Module option to convert a 4 readers central in a 5 to 6 readers central
REF 160.0710

- > To be connected to the upper part of the IPEVIA SECUR 4L
- > Powered by IPEVIA central
- > Can be used to connect 2 additional readers and/or keyboards
- > Management by reader of 1 exit PB, 1 door contact, 24V /2A relay
- > H 80 mm x W 198 mm x D 30 mm



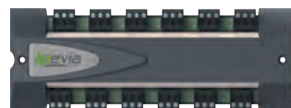
IPEVIA 10E 12S
Module option 10 inputs / 12 dry contacts
REF 160.0000

- > Secure RS485 bus to central
- > Can be mounted on a Din rail (or box)
- > Management of 10 impedance or on/off inputs
- > Management of 12 dry contact outputs
- > 12V power supply (optional external)
- > • H 90 mm x W 200 mm x D 34 mm
- > • H 145 mm x W 210 mm x D 65 mm (with cover)



IPEVIA 12E
Module option 12 inputs
REF 160.0100

- > To be connected to the upper part of the IPEVIA SECUR 4L
- > Powered by IPEVIA central
- > Management of an additional 12 impedance or on/off inputs
- > H 80 mm x W 198 mm x D 30 mm



IPEVIA 12S
Module option 12 dry contacts
REF 160.0150

- > To be connected to the upper part of the IPEVIA SECUR 4L
- > Powered by IPEVIA central
- > Management of 12 dry contact outputs
- > H 80 mm x W 198 mm x D 30 mm

BOX AND POWER SUPPLIES



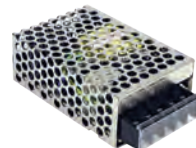
IPEVIA COFFRET SECUR
Steel box
REF 160.1450

- > Metal box (wall mounted)
- > Removable cover, with power status indicator
- > Cover opening and box anti-tamper contact
- > Power supply-charger 12V - 4.5A
- > DC/DC 18 - 9.2V converter (protection of central power supply against electrical strikes and magnetic locks)
- > 1 slot for a central (mounting on Din rail)
- > 1 slot for an additional module (central or entry / exit module)
- > 2 slots for batteries
- > 1 slot for second 12V power supply
- > H 350 mm x W 410 mm x D 139 mm



BATTERIE

Option of 1 12V 8.5AH batteries with connection
REF 350.5500



CONV 12V

DC/DC 18 - 9.2V converter (protection of central power supply against electrical strikes and magnetic locks)
REF 350.2010



A12V-7A

12VDC 7A power supply-charger (to power 12V electrical strikes and/or magnetic locks)
REF 350.1800

EVOLVING MIFARE PLUS® SECURITY READERS

Multi-technology secure access control

CASTEL has developed intercoms with built in readers associating the latest Mifare® contactless chip technology and a Bluetooth authentication using Smartphones.

Multi-technology, intercoms are upgradeable to Mifare DesFire® technologies, CSP3, Ultralight®, double pooling ...

Settings are configured via Castel Evo Web, an intuitive Cloud application with 3 configuration modes (simple, advanced, expert). It can be used to encode configuration badges for upgradeable readers and user badges.

Bluetooth access control

This solution integrates virtual access cards in Smartphones, improving the access control security as well as feeling more instinctive.

Your Smartphone becomes the access key, giving up the traditional access control constraints.

3 modes are available (badge, remote control, hands-free).



LP40 EVO
13.56 MHz evolving compact reader
REF 910.0373

- > Mifare Plus evolving reader to Bluetooth and / or customised configuration (Mifare sector, Mifare Desfire, Double pooling)
- > Upgradeable with Castel Evo Web software
- > Castel Virtual Card Application to use Bluetooth reader
- > Light signalling (blue if powered up, red if access refused and green if access authorised)
- > Pulling out detection using accelerometer
- > IP65 – IK10
- > Surface mounted
- > Power supply 10 to 14VDC (through IPEVIA central)
- > H 90 mm x W 47 mm x D 23 mm



LP80 EVO
13.56 MHz evolving reader
REF 910.0374

- > Mifare Plus evolving reader to Bluetooth and / or customised configuration (Mifare sector, Mifare Desfire, Double pooling)
- > Upgradeable with Castel Evo Web software
- > Castel Virtual Card Application to use Bluetooth reader
- > Light signalling (blue if powered up, red if access refused and green if access authorised)
- > Pulling out detection using accelerometer
- > IP65 – IK10
- > Surface mounted
- > Power supply 10 to 14VDC (through IPEVIA central)
- > H 90 mm x W 85 mm x D 25 mm



LPK80 EVO
13.56 MHz evolving reader with keypad
REF 910.0375

- > Mifare Plus evolving reader to Bluetooth and / or customised configuration (Mifare sector, Mifare Desfire, Double pooling)
- > Upgradeable with Castel Evo Web software
- > Castel Virtual Card Application to use Bluetooth reader
- > Keypad for access direct
- > Light signalling (blue if powered up, red if access refused and green if access authorised)
- > Pulling out detection using accelerometer
- > IP65 – IK10
- > Surface mounted
- > Power supply 10 to 14VDC (through IPEVIA central)
- > H 90 mm x W 85 mm x D 25 mm



BP SECUR

13.56MH badge for EVO readers (LP40 EVO, LP80 EVO, LPK80 EVO) and XELLIP EVO intercoms with access control reader
REF 160.0800

BP32 DES

Mifare® Desfire® badge for EVO readers (LP40 EVO, LP80 EVO, LPK80 EVO) and XELLIP EVO intercoms with access control reader
REF 160.0087



CASTEL VIRTUAL CARD

Virtual access badge management application

- > iOS and Android application to use of a smartphone as an ID access (virtual badge)
- > For EVO readers et intercoms with access control reader



MI ENROLEUR

USB enrolment device for Castel 13.56 MHz Mifare® proximity
REF 120.9300



BP KEY SECUR

13.56MH key-ring for EVO readers (LP40 EVO, LP80 EVO, LPK80 EVO) and XELLIP EVO intercoms with access control reader
REF 160.0810

BP34 DES

Mifare® Desfire® key-ring for EVO readers (LP40 EVO, LP80 EVO, LPK80 EVO) and XELLIP EVO intercoms with access control reader
REF 160.0092



PACK PROG EVO

Encoder and Castel Evo Web software
REF 910.0387

- > Users badge management (13,56 MHz proximity cards)
- > Reader configuration cards creation for LP40, LP80 and LPK80 EVO readers and EVO intercoms with access control reader
- > 3 configuration modes: simple, advanced and expert
- > Ergonomic software interface

MIFARE DESFIRE® COD SECURITY READERS (PRE-CONFIGURED)

Mifare® Desfire® COD

The COD range of readers and badges provides easy access control management, while guaranteeing a high level of security, with Mifare® DesFire® technology, pre-configured at the Castel's factory with encryption keys.



LP40 EVO COD

Pre-configured 13.56 MHz Mifare Desfire compact reader
REF 910.0335

- > Pre-configured Mifare Desfire reader (upgradeable to Bluetooth)
- > Castel Virtual Card Application to use Bluetooth reader
- > Light signalling (blue if powered up, red if access refused and green if access authorised)
- > Pulling out detection using accelerometer
- > IP65 – IK10
- > Surface mounted
- > Power supply 10 to 14VDC (through IPEVIA central)
- > H 90 mm x W 47 mm x D 23 mm



LP80 EVO COD

Pre-configured 13.56 MHz Mifare Desfire reader
REF 910.0336

- > Pre-configured Mifare Desfire reader (upgradeable to Bluetooth)
- > Castel Virtual Card Application to use Bluetooth reader
- > Light signalling (blue if powered up, red if access refused and green if access authorised)
- > Pulling out detection using accelerometer
- > IP65 – IK10
- > Surface mounted
- > Power supply 10 to 14VDC (through IPEVIA central)
- > H 90 mm x W 85 mm x D 25 mm



LPK80 EVO COD

Pre-configured 13.56 MHz Mifare Desfire compact reader with keypad
REF 910.0337

- > Pre-configured Mifare Desfire reader (upgradeable to Bluetooth)
- > Castel Virtual Card Application to use Bluetooth reader
- > Keypad for access direct
- > Light signalling (blue if powered up, red if access refused and green if access authorised)
- > Pulling out detection using accelerometer
- > IP65 – IK10
- > Surface mounted
- > Power supply 10 to 14VDC (through IPEVIA central)
- > H 90 mm x W 85 mm x D 25 mm



BP SECUR COD

13.56MHz badge for EVO COD readers (LP40 EVO COD, LP80 EVO COD, LPK80 EVO COD) and XELLIP EVO intercoms with access control reader

REF 910.0332



MI ENROLEUR

USB enrolment device for Castel 13.56 MHz Mifare® proximity

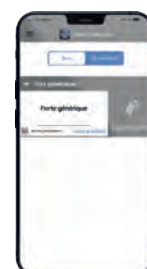
REF 120.9300



BP KEY SECUR COD

13.56MHz key-ring for EVO COD readers (LP40 EVO COD, LP80 EVO COD, LPK80 EVO COD) and XELLIP EVO intercoms with access control reader

REF 910.0333



CASTEL VIRTUAL CARD

Virtual access badge management application.

- > iOS and Android application to use of a smartphone as an ID access (virtual badge)
- > For EVO COD readers et EVO intercoms with access control reader

PACK



PACK IPEVIA SECUR

Access control pack

REF 160.1650

- > Control access central (IPEVIA SECUR 4L)
- > 2 readers (LP40 EVO)
- > 5 badges (BP SECUR)
- > Box with 12V power supply

QR CODE READER



LP ARC EVO QR CODE

Mifare® 13.56 MHz and QR code reader
REF 910.0169

- > 13.56 MHz proximity card reader
- > QR Code reader for temporary accesses, visitor management
- > Light signal (2 programmable leds)
- > Audio signal (built in buzzer)
- > Pulling out detection using accelerometer
- > IP65 - IK08 rating
- > External power supply 7 to 28 V
- > WIEGAND 2 WIRES interface required (REF 910.0143)
- > H 156.5 mm x W 80 mm x D 36 mm



LP ARC EVO CLAV QR CODE

Mifare® 13,56 MHz with keypad and QR Code reader
REF 910.0167

- > 13.56 MHz proximity card reader
- > Sensitive keypad
- > QR Code reader for temporary accesses, visitor management
- > Light signal (2 programmable leds)
- > Audio signal (built in buzzer)
- > Pulling out detection using accelerometer
- > IP65 - IK08 rating
- > External power supply 7 to 28 V
- > WIEGAND 2 WIRES interface required (REF 910.0143)
- > H 156.5 mm x W 80 mm x D 36 mm

KEYPAD



CLAVIER WIEGAND BRAILLE

Wiegand keypad, keys with Braille
REF 330.0100

- > Keypad for direct access
- > Large backlit keys with Braille diameter 16 mm (blue)
- > Light signalling and buzzer
- > Stainless steel vandal proof front panel
- > Flush mounted
- > Power supply 12V (through central IPEVIA)
- > WIEGAND 2 WIRES interface required (REF 910.0143)
- > • H 135 mm x W 100 mm x D 2,5 mm (flush-mounted with flush box D 40 mm)
- > • H 140 mm x W 105 mm x D 60 mm (surface mounted with optional surface box REF 330.0150)

RADIO LONG DISTANCE READER



LR01 SECUR

IPEVIA 868 MHz radio receiver for BR01 SECUR and BR01 SECUR COD remote controls
REF 910.0378

- > ABS box
- > Power supply 12 to 24V
- > IP67 rating
- > H 158.3 mm x W 95.3 mm x D 34.5 mm

ANTENNE LR01/C

Antenna for LR01 SECUR
REF 910.0117



BR01 SECUR

Dual-technology remote control Mifare® Plus and 868 MHz radio for readers (LP40 EVO, LP80 EVO, LPK80 EVO et LR01 SECUR)
REF 910.0376

- > 4 buttons remote control
- > Transmit button codes to LR01/C reader
- > Remote control equipped with 13.56 MHz Mifare® Plus microchip
- > Max reading range 50 m
- > Fireproof ABS VO case
- > Lithium 3V battery
- > H 72.2 mm x W 40 mm x D 14 mm

BR01 SECUR COD

Dual-technology remote control Mifare® Desfire® and 868 MHz radio for readers (LP40 EVO COD, LP80 EVO COD, LPK80 EVO COD et LR01 SECUR)

REF 910.0334

INTERCOMS WITH ACCESS CONTROL READER



XE AUDIO 1B MI EVO
Audio Full IP/SIP entry station with 1 call button and Bluetooth reader DDA compliant
REF 590.3100

- > Stainless steel 316 L vandal proof front panel
- > Upgradeable Mifare+ reader and Bluetooth
- > Full Duplex 10 W communications
- > 1 call button and backlighting label
- > 3 leds DDA compliant
- > Integrated induction loop
- > IP65 - IK09 rating
- > 2 RJ45 (switch function), USB port, RS485 bus, 6 inputs, 2 relays
- > PoE power supply (or optional external power supply)
- > WIEGAND 2 WIRES interface required for connection to central
- > • H 375 mm x W 145 mm x D 2 mm (Flush-mounted with flush box D 61 mm)
- H 375 mm x W 145 mm x D 63 mm (surface-mounted)

XE AUDIO 1B BLE STID
Audio Full IP/SIP entry station with 1 call button and upgradeable Mifare+ and Bluetooth reader DDA compliant
REF 590.6400



XE AUDIO 2B MI EVO
Audio Full IP/SIP entry station with 2 call buttons and upgradeable Mifare+ and Bluetooth reader DDA compliant
REF 590.3300

XE AUDIO 2B BLE STID
Audio Full IP/SIP entry station with 2 call buttons and Bluetooth reader DDA compliant
REF 590.5500

XE AUDIO 4B MI EVO
Audio Full IP/SIP entry station with 4 call buttons and upgradeable Mifare+ and Bluetooth reader DDA compliant
REF 590.3350



XE PAD AUDIO MI EVO
Audio Full IP/SIP entry station with names scrolling and upgradeable Mifare+ and Bluetooth reader DDA compliant
REF 590.3700

- > Stainless steel 316 L vandal proof front panel
- > Upgradeable Mifare+ reader and Bluetooth
- > Full Duplex 10 W communications
- > 3 keys for names scrolling
- > 2,8 inch TFT 240x320 colour screen
- > 3 pictograms for DDA compliance displayed on screen
- > Integrated induction loop
- > IP65 - IK09 rating
- > 2 RJ45 (switch function), USB port, RS485 bus, 6 inputs, 2 relays
- > PoE power supply (or optional external power supply)
- > WIEGAND 2 WIRES interface required for connection to central
- > • H 375 mm x W 145 mm x D 2 mm (Flush-mounted with flush box D 61 mm)
- H 375 mm x W 145 mm x D 63 mm (surface-mounted)

XE PAD AUDIO BLE STID
Audio Full IP/SIP entry station with names scrolling and Bluetooth reader DDA compliant
REF 590.7400



XE AUDIO 1B CLAV MI EVO
Audio Full IP/SIP entry station with 1 call button, keypad and upgradeable Mifare+ and Bluetooth reader DDA compliant
REF 590.3500

- > Stainless steel 316 L vandal proof front panel
- > Upgradeable Mifare+ reader and Bluetooth
- > Full Duplex 10 W communications
- > Numerical keypad for direct dial and access code, buttons with braille
- > 1 call button and backlighting label
- > 3 leds DDA compliant
- > Integrated induction loop
- > IP65 - IK09 rating
- > 2 RJ45 (switch function), USB port, RS485 bus, 6 inputs, 2 relays
- > PoE power supply (or optional external power supply)
- > WIEGAND 2 WIRES interface required for connection to central
- > • H 493 mm x W 155 mm x D 2 mm (Flush-mounted with flush box D 61 mm)
- H 493 mm x W 155 mm x D 63 mm (surface-mounted)

XE AUDIO 1B CLAV BLE STID
Audio Full IP/SIP entry station with 1 call button, keypad and Bluetooth reader DDA compliant
REF 590.1060



XE PAD AUDIO CLAV MI EVO
Audio Full IP/SIP entry station with names scrolling, keypad and upgradeable Mifare+ and Bluetooth reader DDA compliant
REF 590.3900

- > Stainless steel 316 L vandal proof front panel
- > Upgradeable Mifare+ reader and Bluetooth
- > Full Duplex 10 W communications
- > Numerical keypad for direct dial and access code, buttons with braille
- > 3 keys for names scrolling
- > 2,8 inch TFT 240x320 colour screen
- > 3 pictograms for DDA compliance displayed on screen
- > Integrated induction loop
- > IP65 - IK09 rating
- > 2 RJ45 (switch function), USB port, RS485 bus, 6 inputs, 2 relays
- > PoE power supply (or optional external power supply)
- > WIEGAND 2 WIRES interface required for connection to central
- > • H 493 mm x W 155 mm x D 2 mm (Flush-mounted with flush box D 61 mm)
- H 493 mm x W 155 mm x D 63 mm (surface-mounted)

XE PAD AUDIO CLAV BLE STID
Audio Full IP/SIP entry station with names scrolling, keypad and Bluetooth reader DDA compliant
REF 590.7410



XE VIDEO 1B CLAV MI EVO
Audio video Full IP/SIP entry station with 1 call button, keypad and upgradeable Mifare+ and Bluetooth reader DDA compliant
REF 590.3400

- > Stainless steel 316 L vandal proof front panel
- > Upgradeable Mifare+ reader and Bluetooth
- > HD colour video camera - Wide angle 170° (ONVIF)
- > Full Duplex 10 W communications
- > Numerical keypad for direct dial and access code, buttons with braille
- > 1 call button and backlighting label
- > 3 leds DDA compliant
- > Integrated induction loop
- > IP65 - IK09 rating
- > 2 RJ45 (switch function), USB port, RS485 bus, 6 inputs, 2 relays
- > PoE power supply (or optional external power supply)
- > WIEGAND 2 WIRES interface required for connection to central
- > • H 493 mm x W 155 mm x D 2 mm (Flush-mounted with flush box D 61 mm)
- H 493 mm x W 155 mm x D 63 mm (surface-mounted)

XE VIDEO 1B CLAV BLE STID
Audio video Full IP/SIP entry station with 1 call button, keypad and Bluetooth reader DDA compliant
REF 590.1160



XE PAD VIDEO CLAV MI EVO
Audio video Full IP/SIP entry station with names scrolling, keypad and upgradeable Mifare+ and Bluetooth reader DDA compliant
REF 590.3800

- > Stainless steel 316 L vandal proof front panel
- > Upgradeable Mifare+ reader and Bluetooth
- > HD colour video camera - Wide angle 170° (ONVIF)
- > Full Duplex 10 W communications
- > Numerical keypad for direct dial and access code, buttons with braille
- > 3 keys for names scrolling
- > 2,8 inch TFT 240x320 colour screen
- > 3 pictograms for DDA compliance displayed on screen
- > Integrated induction loop
- > IP65 - IK09 rating
- > 2 RJ45 (switch function), USB port, RS485 bus, 6 inputs, 2 relays
- > PoE power supply (or optional external power supply)
- > WIEGAND 2 WIRES interface required for connection to central
- > • H 493 mm x W 155 mm x D 2 mm (Flush-mounted with flush box D 61 mm)
- H 493 mm x W 155 mm x D 63 mm (surface-mounted)

XE PAD VIDEO CLAV BLE STID
Audio video Full IP/SIP entry station with names scrolling, keypad and Bluetooth reader DDA compliant
REF 590.7910



XE VIDEO 1B MI EVO
Audio video Full IP/SIP entry station with 1 call button and upgradeable Mifare+ and Bluetooth reader DDA compliant
REF 590.3000

- > Stainless steel 316 L vandal proof front panel
- > Upgradeable Mifare+ reader and Bluetooth
- > HD colour video camera - Wide angle 170° (ONVIF)
- > Full Duplex 10 W communications
- > 1 call button and backlighting label
- > 3 leds DDA compliant
- > Integrated induction loop
- > IP65 - IK09 rating
- > 2 RJ45 (switch function), USB port, RS485 bus, 6 inputs, 2 relays
- > PoE power supply (or optional external power supply)
- > WIEGAND 2 WIRES interface required for connection to central
- > • H 375 mm x W 145 mm x D 2 mm (Flush-mounted with flush box D 61 mm)
- H 375 mm x W 145 mm x D 63 mm (surface-mounted)

XE VIDEO 1B BLE STID
Audio video Full IP/SIP entry station with 1 call button and Bluetooth reader DDA compliant
REF 590.6900



XE VIDEO 2B MI EVO
Audio video Full IP/SIP entry station with 2 call buttons and upgradeable Mifare+ and Bluetooth reader DDA compliant
REF 590.3200

XE VIDEO 2B BLE STID
Audio video Full IP/SIP entry station with 2 call buttons and Bluetooth reader DDA compliant
REF 590.6000

XE VIDEO 4B MI EVO
Audio video Full IP/SIP entry station with 4 call buttons and upgradeable Mifare+ and Bluetooth reader DDA compliant
REF 590.5960



XE PAD VIDEO MI EVO
Audio video Full IP/SIP entry station with names scrolling and upgradeable Mifare+ and Bluetooth reader DDA compliant
REF 590.3600

- > Stainless steel 316 L vandal proof front panel
- > Upgradeable Mifare+ reader and Bluetooth
- > HD colour video camera - Wide angle 170° (ONVIF)
- > Full Duplex 10 W communications
- > 3 keys for names scrolling
- > 2,8 inch TFT 240x320 colour screen
- > 3 pictograms for DDA compliance displayed on screen
- > Integrated induction loop
- > IP65 - IK09 rating
- > 2 RJ45 (switch function), USB port, RS485 bus, 6 inputs, 2 relays
- > PoE power supply (or optional external power supply)
- > WIEGAND 2 WIRES interface required for connection to central
- > • H 375 mm x W 145 mm x D 2 mm (Flush-mounted with flush box D 61 mm)
- H 375 mm x W 145 mm x D 63 mm (surface-mounted)

XE PAD VIDEO BLE STID
Audio video Full IP/SIP entry station with names scrolling and Bluetooth reader DDA compliant
REF 590.7900

ACTIVATION CARDS EVOLVING MIFARE PLUS® SECURITY READERS



CARD EVO 1
Activation card to expanding functions for 1 EVO reader
REF 910.0379

- > Activation card to expanding functions
- > 1 reader type LP40 EVO / LP80 EVO / LPK80 EVO
- > Functions available: Mifare secteur / Mifare desfire / Double pouling

CARD EVO 5
Activation card to expanding functions for 5 EVO readers
REF 910.0380

CARD EVO 10
Activation card to expanding functions for 10 EVO readers
REF 910.0381

CARD EVO 20
Activation card to expanding functions for 20 EVO readers
REF 910.0382



CARD BLE 1
Activation card to Bluetooth function for 1 EVO reader
REF 910.0383

- > Activation card to Bluetooth function
- > 1 reader type LP40 EVO / LP80 EVO / LPK80 EVO

CARD BLE 5
Activation card to Bluetooth function for 5 EVO readers
REF 910.0384

CARD BLE 10
Activation card to Bluetooth function for 10 EVO readers
REF 910.0385

CARD BLE 20
Activation card to Bluetooth function for 20 EVO readers
REF 910.0386

ACCESSORIES



WIEGAND 2 WIRES
Allows to connect a Wiegand access control reader and XELLIP EVO intercoms with control access reader on a IPEVIA SECUR 4L central.
Max 100 mA..
REF 910.0143

CEINTURE 375
Stainless-steel belt for big XE units (H 375 mm)
REF 590.9320

VISIÈRE 375
Rain shield for big XE units (H 375 mm)
REF 590.9500

CEINTURE 493
Stainless-steel belt for very big XE units (H 493 mm)
REF 590.9100

KIT GRIFFES XE2
Plasterboard mounting kit for XELLIP intercom
REF 590.9600

KIT DOME CAMERA XE2
5 camera lens + tool pack
REF 590.9700

SOFTWARES



IPEVIA Manager
IPEVIA access control software

Description page 111

LICENCE IPEVIA ANPR
IPEVIA ANPR license for 1 to 4 license plate reading cameras
REF 160.0905



LICENCE IPEVIA MEDEA
IPEVIA license for IP interfacing with MEDEA ELKRON PRO
REF 160.0030



MODULE RESERVATION
Module for booking and planning in IPEVIA MANAGER software
REF 160.0020

- > Module available with a licence
- > Booking mode for employees or customers
- > Different booking modes: badge access / free access / free access after responsible badge scanning / badge access after responsible badge scanning
- > Configuration of access to doors and/or areas
- > Personalised configuration of the Reservation / People / Actions / Instructions modules
- > Management and supervision of all bookings

APERIO®



APERIO H100 DROITE
H100 Aperio® on rose electronic handle with Mifare® reader – right opening
REF 180.1170

APERIO H100 GAUCHE
H100 Aperio® on rose electronic handle with Mifare® reader – left opening
REF 180.1171



APERIO CYL SANS HUB
Aperio® online cylinder: electrical lock system with Mifare® reader – Stainless steel double knob cylinder C100
REF 180.9200

APERIO CYL DOUBLE LECT
Aperio® online cylinder double readers: electrical lock system with Mifare® reader – Stainless steel double knob cylinder C100
REF 180.9300



APERIO DEMI CYL
Aperio® online half cylinder: electrical lock system with Mifare® reader – Stainless steel knob cylinder C100
REF 180.9250



APERIO BEQ SANS HUB
Aperio® online door handle: electrical lock system with Mifare® reader – Standard door handle French Euro profile E100
REF 180.9100



APERIO BEQ CODE SANS HUB
Aperio® online door handle: electrical lock system with Mifare® reader + keypad – Standard door handle French Euro profile E100
REF 180.9102



APERIO SER SANS HUB
Aperio® electromechanical lock with door handle and Mifare® reader – European profile L100
REF 180.9400



HUB 1 / 6
Hub radio for 6 Aperio® cylinders or door handles – Max. distance 20 m
REF 180.9801

APERIO LOG
Software tool to setup and configure Aperio® devices/ hubs (radio communication USB dongle included)
REF 180.9900

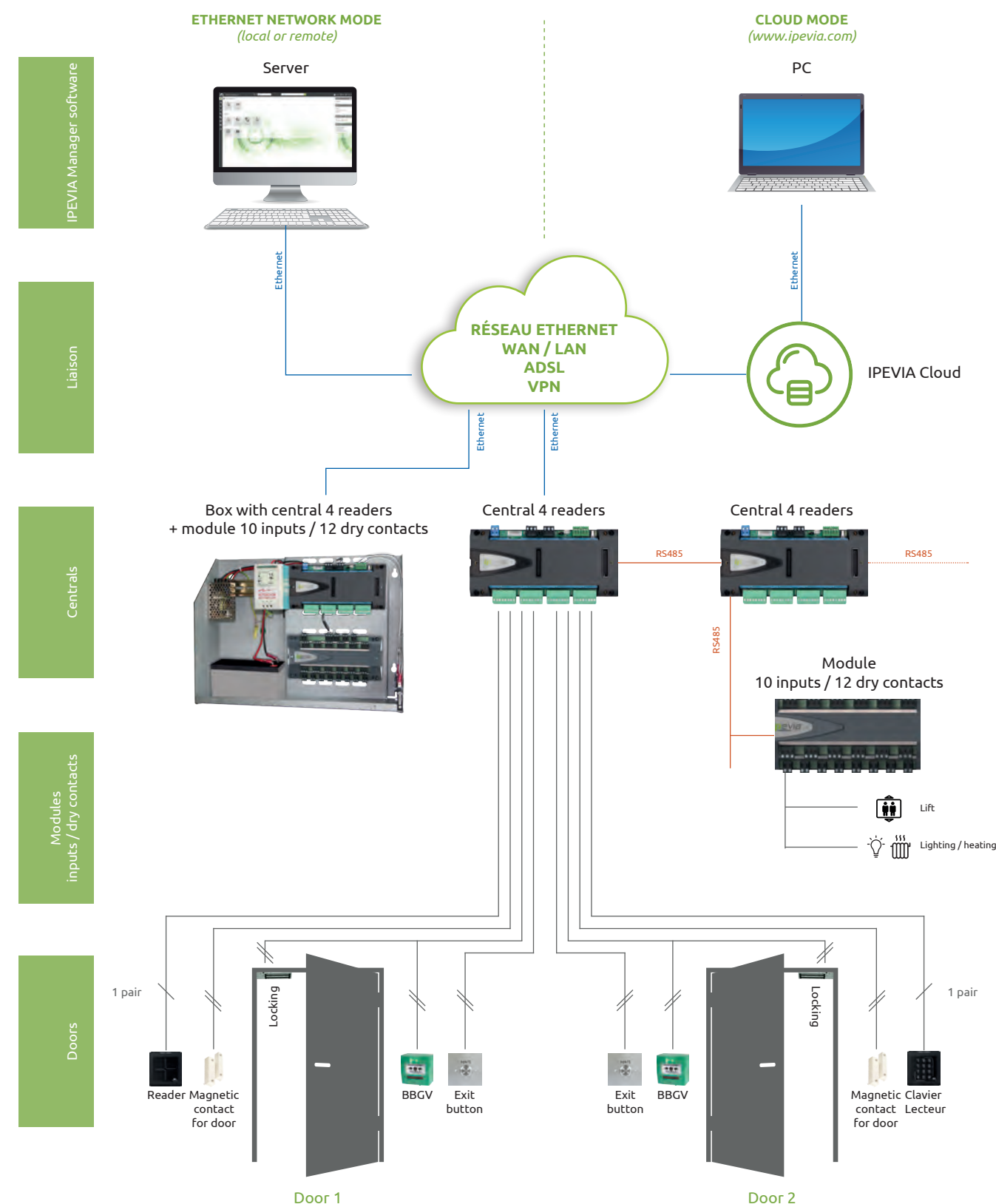
EMBOUIT POIGNEE H100
U shape ending for H100 handles
REF 180.9512

ANTENNE EXTERNE APERIO
External antenna for communication hub
REF 180.9501

APERIO OUTIL CYL V3
V3 cylinder tool
REF 180.9503

ACTIVATION FONCTION APERIO IPEVIA
Activation license to manage Aperio® door handles and electronic cylinders
REF 160.8100

SCHEMATIC



Up to 32 centrals per RS485 bus

Up to 64 centrals per network

Up to 14 080 inputs / dry contacts per network

Up to 384 doors per network