

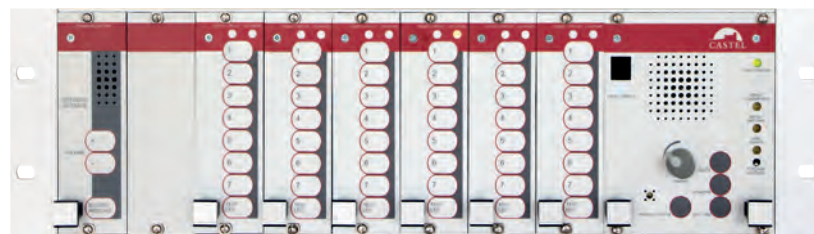


Security intercom

CASI: CENTRAL ALARM AND SECURITY INTERCOM SYSTEMS

A security system aimed at centralising and localising emergency calls coming from voice-activated «glass broken» terminals.

SCHEMATIC (SEE PAGE 75)



- Alarm and communication centralisation
- Alarm activation by glass broken device or handset call
- Central buzzer for signalling alarms
- Car park audio device
- Emission of industry standard NFS 32001 emergency evacuation signal
- Repeater 0dB module available for direct link to an evacuation or alarm bell system

Analog

Wiring: 1 twisted pair 9/10

Star/bus wiring

Simplex

Configuration by PC

Central with IP interface

Lines monitoring

Supervision software



MAIN APPLICATIONS

High rise buildings, car parks, public buildings, nuclear power plants, airports, etc., and many other customised applications.



Remote console build-in version



CASTEL Supervisor

MAIN BENEFITS

CASI meets the criteria defined in industry standard NFS 61950 and in accordance with technical instruction IT 248248

It also conforms with industry standard EN 60950 for security use. It complies with article GH50 of the high rise buildings regulations.

CASI is secure

It detects and indicates all anomalies that might occur in the various connecting cables (line opening, short circuits, etc.).

It can detect from 7 to 980 directional identities by address line

(For multiple terminals per line, please ask).

Call localisation performance

Front panel display direct to CASI.

Comfortable operating

Emergency calls can be received on a remote console with display.

Supervised system

Supervision software allows you to visualize on graphical views, calls, line faults, to pick up-hang up, as well as getting all events history.

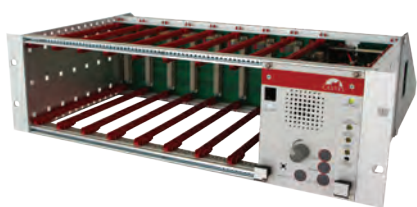
Tranquilization function

When a security terminal is calling, an audio tranquilization message can be broadcast until call pickup (factory preset message from the tranquilization module or from an external source).

IP interface



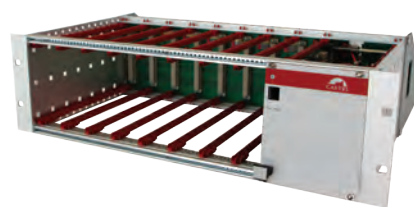
ALARM CENTRAL



CASI
Intercom security and alarm central
REF 220.5000

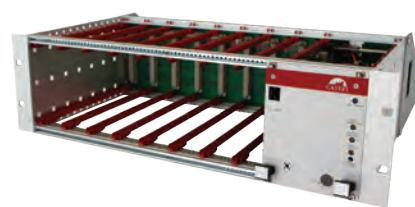
- > 49 lines base rack (7 zones module not included)
- > Communications can be managed on the front panel
- > Audio simplex, with 3 watts power
- > Supply power rescued by battery
- > Complies with NFS 32001, NFS 61950 and EN 60950 standards
- > Power supply 220V AC (cable included)
- > H 132.5 mm x W 482.6 mm x D 431 mm (rack-mountable 3U format)

COFR 3U
3U housing option
REF 220.1300



RACK EXT1
CASI extension rack 1
REF 220.5900

- > 3U extension rack 1 for 56 directions (7 zones module not included)
- > Associated with the previous rack
- > Complies with NFS 32001, NFS 61950 and EN 60950 standards
- > Power supply by previous central (cable included)
- > H 132.5 mm x W 482.6 mm x D 351 mm (rack-mountable 3U format)



RACK EXT2
CASI extension rack 2
REF 220.6100

- > 3U extension rack 2 for 56 directions with power supply (7 zones module not included)
- > Associated with the previous rack
- > Complies with NFS 32001, NFS 61950 and EN 60950 standards
- > Supply power rescued by battery
- > Power supply 220V AC (cable included)
- > H 132.5 mm x W 482.6 mm x D 431 mm (rack-mountable 3U format)



MOD 7 Z
7 zones module
REF 220.1900

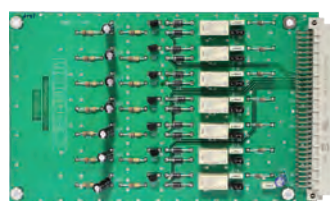
- > Manages 7 zones of security terminals
- > 7 buttons with lighting for call and 1 button for test
- > 1 light for contact circuit fault and 1 light for cut
- > Power supply by central
- > Module to be inserted in the central

MOD 7Z TRANQ
7 zones module with tranquilization option
REF 220.6900



MOD TRANQ
Tranquilization module
REF 220.8600

- > Tranquilization message issued when receiving a call from emergency station
- > Looping message until call pickup
- > Factory preset messages or external source
- > Only usable with 7 zones module with tranquilization option
- > 1 test button (listening message)
- > 2 buttons to adjust volume
- > 1 light signal for module status
- > Power supply by central
- > Module to be inserted in the central



REPORT 7D CASI LEXAN
Dry contact report module
REF 220.6400

- > Manages 7 dry contacts associated with 7 directions (1 module 7 zones)
- > Dry contacts in NO or NC position
- > Engagement by upwelling event: call, contact circuit fault, or cut circuit fault
- > Power supply by central
- > Module to be inserted in the central

REMOTE CONSOLE



MP CASI
Remote console for CASI
REF 250.0000

- > Desktop or wall mount station
- > LCD display (2 lines x 16 characters)
- > Numeric keypad and functions keys
- > 11 keys and 1 programmable relay
- > ABS case
- > IP40 rating
- > 15V to 30V power supply (through central or external)
- > H 265 mm x W 138 mm x D 70 mm



MPP CASI
Remote console build-in version for CASI
REF 250.0100

- > Flush or surface mounted
- > LCD display (2 lines x 16 characters)
- > Numeric keypad and functions keys
- > 11 keys and 1 programmable relay
- > Anodized aluminium front panel
- > IP40 rating
- > 15V to 30V power supply (through central or external)
- > • H 280 mm x W 170 mm x D 2 mm (flush-mounted with flush box D 47 mm)
- > • H 282.5 mm x W 172.5 mm x D 65 mm (surface-mounted with optional MKSP surface box)

SECURITY TERMINALS



BGPH
Audio glass broken device surface mounting
REF 210.0100

- > Dedicated terminal for central CASI
- > Call initiated by glass broken
- > Terminal is connected to one of the 7 lines of the 7 zones module
- > No power supply needed (powered by the central)
- > H 230 mm x W 135 mm x D 51 mm (surface-mounted)

BGPH ENCASTRE
Audio glass broken device flush mounting
REF 210.0000



BGPH E
Waterproof audio glass broken device
REF 210.0200

- > Dedicated waterproof terminal for central CASI
- > Call initiated by glass broken
- > Terminal is connected to one of the 7 lines of the 7 zones module
- > IP66 rating
- > No power supply needed (powered by the central)
- > • H 280 mm x W 170 mm x D 2 mm (flush-mounted with flush box D 47 mm)
- > • H 282.5 mm x W 172.5 mm x D 65 mm (surface-mounted)

BGPH E BOUCLE AUDITIVE
Waterproof audio glass broken device with induction loop
REF 210.0300



BGPH DM
Flexible cell audio device
REF 210.2000

- > Dedicated terminal for central CASI
- > Call initiated by flexible cell (deformable membrane)
- > Terminal is connected to one of the 7 lines of the 7 zones module
- > No power supply needed (powered by the central)
- > • H 205 mm x W 120 mm x D 22 mm (flush-mounted with flush box D 20 mm)
- > • H 205 mm x W 120 mm x D 42 mm (surface-mounted)



CPPH
Audio device with mushroom button
REF 210.1000

- > Dedicated terminal for central CASI
- > Call is initiated by mushroom button
- > Terminal is connected to one of the 7 lines of the 7 zones module
- > No power supply needed (powered by the central)
- > H 230 mm x W 135 mm x D 51 mm (surface-mounted)



TSI
Red security handset
REF 210.3000

- > Dedicated intercom handset for central CASI
- > Call when picking up the handset
- > Terminal is connected to one of the 7 lines of the 7 zones module
- > ABS case with wall mounting
- > No power supply needed (powered by the central)
- > H 235 mm x W 74 mm x D 78 mm

SUPERVISION



CASTEL SUPERVISOR

Supervision software

REF 110.8300

- > Visualise and archive events as communication, incoming /outgoing call, call waiting, relay state, forwarding state
- > Visualisation towards synoptic and/or continuous feed
- > Call forwarding regarding time slots
- > Compatibility with Windows 10, Server 2003, Server 2008
- > Compatibility with Oracle and SQL Server database
- > Multiuser software (no station licence) on a fully secured internet connection

CASTEL CONFIGURATOR

CASTEL Supervisor configuration software

REF 110.8400



M HYB IP BOX 4L CASI

IP interface for supervision

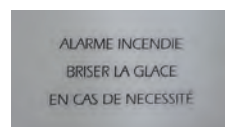
REF 220.0950

PACK CASI SUPERVISION

Supervision bundle (interface + supervision software + configuration module + CastelPilot)

REF 220.4000

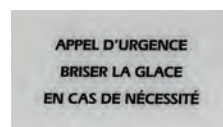
ACCESSORIES AND POWER SUPPLIES



GLA

10 glasses pack for BGPH (dimensions 130 x 75 mm)

REF 240.0000



GLA APPEL URGENCE

10 glasses pack for BGPH (dimensions 130 x 75 mm) «Emergency call» serigraphy

REF 240.0200



MKSP

Surface mounting kit for remote console build-in version for CASI

REF 440.2800



ML CASI

Software and parameter module

REF 440.4500



A15V-0A4-J

Power supply 15VDC 400mA - Jack plug

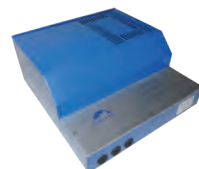
REF 440.7100



A24V-2,5A

Cutting power supply on din track 24VDC 2A

REF 110.9100



A24V-3A-S

24VDC 3A saved power supply - battery 2.1 Ah

REF 440.4900-1

SCHEMATIC

