



Security intercom

CASI: CENTRAL ALARM AND SECURITY INTERCOM SYSTEMS

A security system aimed at centralising and localising emergency calls coming from voice-activated «glass broken» terminals.

SCHEMATIC
(SEE PAGE 77)



Main applications

High rise buildings, car parks, public buildings, nuclear power plants, airports, etc., and many other customised applications.

Main benefits

CASI meets the criteria defined in industry standard NFS 61950 and in accordance with technical instruction IT 248

It also conforms with industry standard EN 60950 for security use. It complies with article GH50 of the high rise buildings regulations.

CASI is secure

It detects and indicates all anomalies that might occur in the various connecting cables (line opening, short circuits, etc.).

It can detect from 7 to 980 directional identities by address line (for multiple terminals per line, please ask).

Call localisation performance

Front panel display direct to CASI.

Comfortable operating

Emergency calls can be received on a remote console with display.

Supervised system

Supervision software allows you to visualize on graphical views, calls, line faults, to pick up-hang up, as well as getting all events history.

Tranquilization function

When a security terminal is calling, an audio tranquilization message can be broadcast until call pickup (factory preset message from the tranquilization module or from an external source).

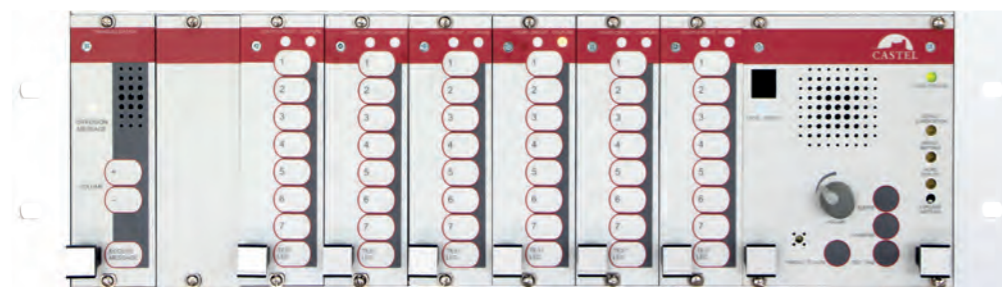
New IP interface



Remote console build-in version



CASTEL Supervisor



Alarm and communication centralisation

Alarm activation by glass broken device or handset call

Central buzzer for signalling alarms

Car park audio device

Emission of industry standard NFS 32001 emergency evacuation signal

Repeater 0dB module available for direct link to an evacuation or alarm bell system

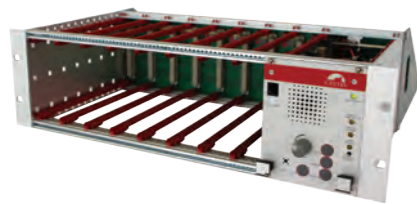
Analog	Star/bus wiring	Simplex	Configuration by PC
Wiring: 1 twisted pair 9/10	Central with IP interface	Lines monitoring	Supervision software





Security intercom

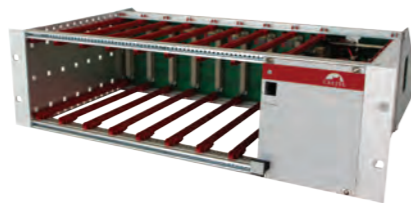
ALARM CENTRAL



CASI
Intercom security and alarm central
REF 220.5000

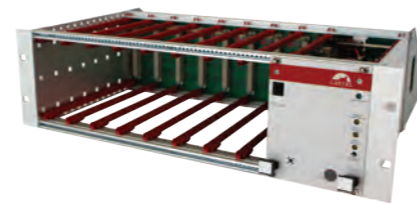
- > 49 lines base rack (7 zones module not included)
- > Communications can be managed on the front panel
- > Audio simplex, with 3 watts power
- > Supply power rescued by battery
- > Complies with NFS 32001, NFS 61950 and EN 60950 standards
- > Power supply 220V AC (cable included)
- > H 132.5 mm x W 482.6 mm x D 431 mm (rack-mountable 3U format)

COFR 3U
3U housing option
REF 220.1300



RACK EXT1
CASI extension rack 1
REF 220.5900

- > 3U extension rack 1 for 56 directions (7 zones module not included)
- > Associated with the previous rack
- > Complies with NFS 32001, NFS 61950 and EN 60950 standards
- > Power supply by previous central (cable included)
- > H 132.5 mm x W 482.6 mm x D 351 mm (rack-mountable 3U format)



RACK EXT2
CASI extension rack 2
REF 220.6100

- > 3U extension rack 2 for 56 directions with power supply (7 zones module not included)
- > Associated with the previous rack
- > Complies with NFS 32001, NFS 61950 and EN 60950 standards
- > Supply power rescued by battery
- > Power supply 220V AC (cable included)
- > H 132.5 mm x W 482.6 mm x D 431 mm (rack-mountable 3U format)



MOD 7 Z
7 zones module
REF 220.1900

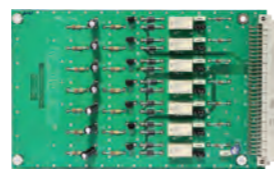
- > Manages 7 zones of security terminals
- > 7 buttons with lighting for call and 1 button for test
- > 1 light for contact circuit fault and 1 light for cut
- > Power supply by central
- > Module to be inserted in the central

MOD 7Z TRANQ
7 zones module with tranquilization option
REF 220.6900



MOD TRANQ
Tranquilization module
REF 220.8600

- > Tranquilization message issued when receiving a call from emergency station
- > Looping message until call pickup
- > Factory preset messages or external source
- > Only usable with 7 zones module with tranquilization option
- > 1 test button (listening message)
- > 2 buttons to adjust volume
- > 1 light signal for module status
- > Power supply by central
- > Module to be inserted in the central



REPORT 7D CASI LEXAN
Dry contact report module
REF 220.6400

- > Manages 7 dry contacts associated with 7 directions (1 module 7 zones)
- > Dry contacts in NO or NC position
- > Engagement by upwelling event: call, contact circuit fault, or cut circuit fault
- > Power supply by central
- > Module to be inserted in the central

REMOTE CONSOLE



MP CASI
Remote console for CASI
REF 250.0000

- > Desktop or wall mount station
- > LCD display (2 lines x 16 characters)
- > Numeric keypad and functions keys
- > 11 keys and 1 programmable relay
- > ABS case
- > IP40 rating
- > 15V to 30V power supply (through central or external)
- > H 265 mm x W 138 mm x D 70 mm
- > IP40 rating
- > 15V to 30V power supply (through central or external)
- > H 265 mm x L 138 mm x P 70 mm



MPP CASI
Remote console build-in version for CASI
REF 250.0100

- > Flush or surface mounted
- > LCD display (2 lines x 16 characters)
- > Numeric keypad and functions keys
- > 11 keys and 1 programmable relay
- > Anodized aluminium front panel
- > IP40 rating
- > 15V to 30V power supply (through central or external)
- > H 280 mm x W 170 mm x D 2 mm (flush-mounted with flush box D 47 mm)
- > H 282.5 mm x W 172.5 mm x D 65 mm (surface-mounted with optional MKSP surface box)

SECURITY TERMINALS



BGPB
Audio glass broken device surface mounting
REF 210.0100

- > Dedicated terminal for central CASI
- > Call initiated by glass broken
- > Terminal is connected to one of the 7 lines of the 7 zones module
- > No power supply needed (powered by the central)
- > H 230 mm x W 135 mm x D 51 mm (surface-mounted)

BGPB ENCASTRE
Audio glass broken device flush mounting
REF 210.0000



BGPB E
Waterproof audio glass broken device
REF 210.0200

- > Dedicated waterproof terminal for central CASI
- > Call initiated by glass broken
- > Terminal is connected to one of the 7 lines of the 7 zones module
- > IP66 rating
- > No power supply needed (powered by the central)
- > H 280 mm x W 170 mm x D 2 mm (flush-mounted with flush box D 47 mm)
- > H 282.5 mm x W 172.5 mm x D 65 mm (surface-mounted)

BGPB E BOUCLE AUDITIVE
Waterproof audio glass broken device with induction loop
REF 210.0300



BGPB D
Design audio glass broken device
REF 230.0000

- > Dedicated terminal for central CASI
- > Call initiated by glass broken
- > Terminal is connected to one of the 7 lines of the 7 zones module
- > No power supply needed (powered by the central)
- > H 205 mm x W 120 mm x D 22 mm (flush-mounted with flush box D 20 mm)
- > H 205 mm x W 120 mm x D 42 mm (surface-mounted)



BGPB DM
Flexible cell audio device
REF 210.2000

- > Dedicated terminal for central CASI
- > Call initiated by flexible cell (deformable membrane)
- > Terminal is connected to one of the 7 lines of the 7 zones module
- > No power supply needed (powered by the central)
- > H 205 mm x W 120 mm x D 22 mm (flush-mounted with flush box D 20 mm)
- > H 205 mm x W 120 mm x D 42 mm (surface-mounted)

BGPB DM BOUCLE AUDITIVE
Flexible cell audio device with induction loop
REF 210.2100

BGPB DM APPEL URGENCE
Flexible cell audio device - «Emergency call» serigraphy
REF 260.2000



CPPH
Audio device with mushroom button
REF 210.1000

- > Dedicated terminal for central CASI
- > Call is initiated by mushroom button
- > Terminal is connected to one of the 7 lines of the 7 zones module
- > No power supply needed (powered by the central)
- > H 230 mm x W 135 mm x D 51 mm (surface-mounted)



TSI
Red security handset
REF 210.3000

- > Dedicated intercom handset for central CASI
- > Call when picking up the handset
- > Terminal is connected to one of the 7 lines of the 7 zones module
- > ABS case with wall mounting
- > No power supply needed (powered by the central)
- > H 235 mm x W 74 mm x D 78 mm





⌘ SUPERVISION



CASTEL SUPERVISOR

Supervision software
REF 110.8300

- > Visualise and archive events as communication, incoming /outgoing call, call waiting, relay state, forwarding state
- > Visualisation towards synoptic and/or continuous feed
- > Call forwarding regarding time slots
- > Compatibility with Windows XP, 7, 10, Server 2003, Server 2008
- > Compatibility with Oracle and SQL Server database
- > Multiuser software (no station licence) on a fully secured internet connection

CASTEL CONFIGURATOR

CASTEL Supervisor configuration software
REF 110.8400



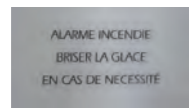
M HYB IP BOX 4L CASI

IP interface for supervision
REF 220.0950

PACK CASI SUPERVISION

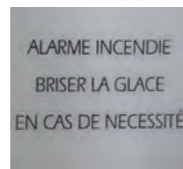
Supervision bundle (interface + supervision software + configuration module + Castel Pilot)
REF 220.4000

⌘ OPTIONS



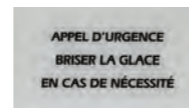
GLA

10 glasses pack for BGPH (dimensions 130 x 75 mm)
REF 240.0000



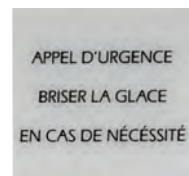
GLAD

10 glasses pack for BGPH D (dimensions 63 x 60 mm)
REF 240.0100



GLA APPEL URGENCE

10 glasses pack for BGPH (dimensions 130 x 75 mm) «Emergency call» serigraphy
REF 240.0200



GLAD APPEL URGENCE

10 glasses pack for BGPH D (dimensions 63 x 60 mm) «Emergency call» serigraphy
REF 240.0300



MKSP

Surface mounting kit for remote console build-in version for CASI
REF 440.2800



ML CASI

Software and parameter module
REF 440.4500



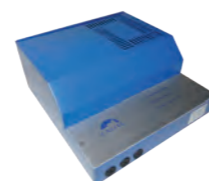
A15V-0A4-J

Power supply 15VDC 400mA - Jack plug
REF 440.7100



A24V-2A

Cutting power supply on din track 24VDC 2A
REF 110.9100



A24V-3A-S

24VDC 3A saved power supply - battery 2.1 Ah
REF 440.4900-1

⌘ SCHEMATIC

