



## Bring you a global solution

Our main aim is to answer all specific requirements of your installation by bringing you a global solution. CASTEL can offer you multiple complementary accessories for its intercom and access control systems ranges.

### VIDEO



**MONITEUR COUL 10"**  
Colour Monitor 10" VGA and BNC  
REF 310.0000

**ALIM MONITEUR 10"**  
10" colour monitor power supply  
(230V/12V 1.2A)  
REF 310.0010



**MONITEUR COUL 21"**  
Colour Monitor 21" VGA and BNC  
REF 310.0100



**DISTRIB VIDEO 1E/4S**  
Video distributor 1 input and 4 outputs  
REF 310.1000



**DISTRIB VIDEO 1E/8S**  
Video distributor 1 input and 8 outputs  
REF 310.1100



**DVR 8 CH**  
Numeric multiplexer 8 channels without  
hard drive and 8 alarm inputs  
REF 310.2000

**DVR 16 CH**  
Numeric multiplexer 16 channels  
without hard drive and 16 alarm inputs  
REF 310.2100



**KIT EMETTEUR/RECEPTEUR**  
Transmitter receiver Balun video kit,  
1 pair Cat 5  
REF 310.3000



**ENCODEUR VIDEO IP**  
Convert an analog video signal (analog  
intercom station camera) to an IP video  
signal  
REF 310.4100

### INTRUSION



**DETECTEUR BI VOLU**  
Dual technology volumetric detector  
(IR and Microwave) with three-function  
hemispherical Fresnel lens - NFA2PREF  
REF 320.0010



**ROTULE DETECTEUR**  
Patented orientable ball joint for wall  
or ceiling installation  
REF 320.0110



**DETECTEUR DOUB TECH EXT**  
Outdoor dual technology detector - IR  
and microwave  
REF 320.0500



**SIRENE INT**  
Indoor NFA2P siren with battery  
REF 320.0300



**SIRENE EXT**  
Outdoor NFA2P siren with battery  
REF 320.0600



**ALIM 12V 2.2A**  
12VDC 2.2A saved power supply -  
battery 17 Ah  
REF 320.0400



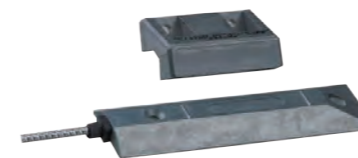
**CONTACT DE PORTE**  
Magnetic contact for surface mounting -  
for door/window frames  
REF 320.0200



**CONTACT DE PORTE NFA2P**  
Magnetic contact for flush mounting -  
for door/window frames - NFA2P  
REF 320.0900



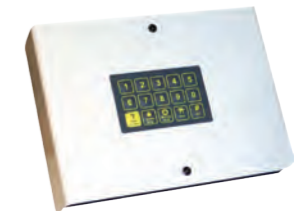
**DETECTEUR D'OUVERTURE NFA2P**  
Magnetic contact for surface mounting -  
for door/window frames - NFA2P  
REF 320.1000



**CONTACT DE SOL SABOT**  
Magnetic contact for sliding/pivoting  
doors - NFA2P  
REF 320.1100



**DETECTEUR BRIS DE VERRE**  
Glass break detector  
REF 320.0800



**TRANSMETTEUR TEL**  
Telephone transmitter - 8 inputs -  
4 numbers - voice and digital  
transmission  
REF 320.5000



**TRANSMETTEUR TEL SERIAL**  
Telephone transmitter - 4 numbers  
(partial mode) or unlimited (Full mode) -  
voice and digital transmission  
REF 320.5100





# Accessories

## ACCESS CONTROL



### CLAVIER AUTONOME

Polycarbonate standalone coded keyboard (IP65) with 2 relays - 1 buzzer  
REF 330.0000

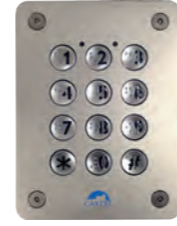
- > Blue backlight keys - 3 Leds
- > Tamper function
- > Programming through the front panel via a master code
- > Capacity: 100 user codes
- > Dimensions 120 x 36 x 83 mm - Power supply 12/24V 0,25V not included



### CLAVIER AUTONOME AV

Zamak standalone coded keyboard (IP65 - IK10) with 2 relays - 1 buzzer  
REF 330.0050

- > Blue backlight keys - 3 Leds
- > Tamper function
- > Programming through the front panel via a master code
- > Capacity: 100 user codes
- > Dimensions 120 x 36 x 83 mm
- > Power supply 12/24V 0,25V not included



### CLAVIER AUTONOME BRAILLE

Standalone coded keyboard with backlit keys with Braille diameter 16 mm (blue)  
REF 330.0200

- > 2 relays - Led and operating buzzer
- > Stainless steel vandal proof front panel
- > Flush mounted
- > Programming through the front panel via a master code
- > Dimensions 135 x 100 x 2,5 mm (flush-mounted with flush box D 40 mm)
- > 140 x 105 x 60 mm (surface-mounted with optional surface box REF 330.0150)
- > Power supply 12V not included



### GACHE 128 SS TET 10/24V

Stationary contact fail secure electrical strike  
REF 320.1700

- > Height 66mm
- > Width 16mm
- > Depth 25,5mm
- > 10/24V



### GACHE 128 E SS TET 10/24V

Stationary contact fail secure electrical strike  
REF 320.1800

- > Manual opening
- > Height 66mm
- > Width 16mm
- > Depth 25,5mm
- > 10/24V

### EQUERRE DE MONTAGE TYPE L

Angle bracket for surface mounting magnetic lock  
REF 320.1400

### EQUERRE DE MONTAGE TYPE L+Z

Angle bracket L and Z combine for surface mounting magnetic lock  
REF 320.1500



### BP SORTIE

Push button  
REF 330.1000

- > Integration inside housing box Ø 60 mm
- > Brush stainless steel front
- > Laser engraving «door»
- > Dimensions 90 x 90 x 1,5 mm



### BP SORTIE H ZAMAK

Zamak push button (IP54 - IK09)  
REF 330.1200

- > Compliant with disability regulations
- > Sound information through a buzzer and a green led for door opening information
- > Permanent blue led lighting
- > Braille marking and «door» screen printing
- > Integration inside housing box Ø 60 mm
- > Optional base for surface mounting REF 330.1250
- > Dimensions 90 x 90 x 24 mm (96 x 95 x 39 mm with base)
- > Power supply 12/24V not included



### BBGV DOUBLE CONTACT

Green coverless manual trigger with 2 contacts  
REF 320.3000

## CARDS PERSONNALISATION



### IMPRIMANTE

Plastic card printer ZN1U0000RS ZENIUS  
REF 330.5000



### IMPRIMANTE DF

Plastic card printer PM1H0000RD PRIMACY (double face)  
REF 330.5700



### LOGICIEL PRO

eMedia-CS Software professional version  
REF 330.5100



### VENTOUSE ENCASTRE 300KG 24V

Magnetic lock flush mounting standard compliant NFS61937  
REF 320.1200

- > Holding power 3000N
- > Length 230 mm
- > Width 38mm
- > Depth 27mm
- > 24V



### VENTOUSE APPLIQUE 300KG 24V

Magnetic lock surface mounting standard compliant NFS61937  
REF 320.1300

- > Holding power 3000N
- > Length 250mm
- > Width 42mm
- > Depth 25mm
- > 24V



### WEB CAM

Web quick pro webcam  
REF 330.5400

### RUBAN

5 panel colour ribbon YMCKO (for 100 printing)  
REF 330.5200

### KIT NETTOYAGE

Cleaning kit Regular ACL001 (for 1000 printing)  
REF 330.5300

### LACET

Plastic card holder lanyard  
REF 330.5500

### PORTE BADGE

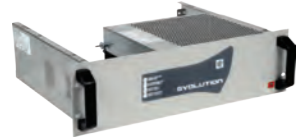
Plastic card holder  
REF 330.5600





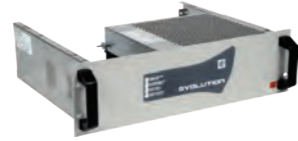
# Accessories

## POWER SUPPLIES



### RACK ALIM 24V24A

24V 24A (rack) saved power supply - (batteries)  
REF 350.1000



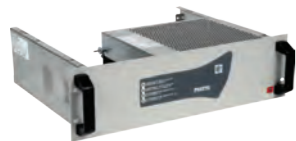
### RACK ALIM 12V24A

12V 24A (rack) saved power supply - (batteries)  
REF 350.1100



### COFF ALIM 24V16A

24V 16A (boxed) saved power supply - (batteries)  
REF 350.1200



### RACK ALIM AES24V24A

AES 24V 24A (rack) saved power supply - (batteries)  
REF 350.1300



### ALIM AES 24V 3A S

AES 24V 3A 7Ah saved power supply - (batteries) standards compliant NFS 61940  
REF 350.1400



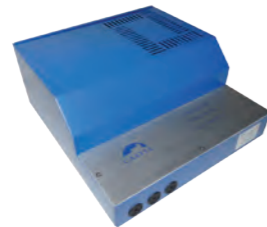
### ALIM A24V 6A S

24V 6A (boxed) saved power supply - (batteries)  
REF 350.1500



### CONV 24/12V

24/12VDC 3A converter  
REF 350.1600



### A12V-3AS

12V 3A saved power supply - (batteries)  
REF 350.1700

### A24V-3A5-S8.5

24 VDC 3A saved power supply with batteries 8.5 Ah  
REF 110.9200



### A12V-1.25A

12 VDC 1.25A power supply (switch mode). Din rail mounting  
REF 110.9300

## AUDIO



### HP/MICRO USB

Jabra Speak 410 MS Speakerphone USB  
REF 300.0000



### BOUCLE INDUCTION

Remote induction loop (integrated in ABS case and stainless steel front panel). Power supply 24V  
REF 540.3100

## NETWORK



### IP 2 WIRES CONVERTER

Allows to connect a remote IP equipment on two wires (up to 500 meters on a twisted pair). Made of 1 module installed upstream and connected to the switch and 1 module installed downstream and connected to the remote IP equipment.  
REF 310.5000

### A48V-1,25A-J

48VDC 1.25A power supply including jack connector for IP 2 WIRES CONVERTER (distance > from 250m to 500m).  
REF 540.6200

## COLUMNS



### POTELET VL XE PM

Aluminium post - Height 1,50m  
- RAL colour aluminium 9006 - Ground plate mounting with 3 rawl plugs Ø 12 not provided - with a pre cut for small XE intercom unit  
REF 590.9800

### POTELET VL XE GM

Aluminium post - Height 1,50m  
- RAL colour aluminium 9006 - Ground plate mounting with 3 rawl plugs Ø 12 not provided - with a pre cut for big XE intercom unit  
REF 590.9810

### POTELET VL XE SANS DECOUPE

Aluminium post - Height 1,50m  
- RAL colour aluminium 9006 - Ground plate mounting with 3 rawl plugs Ø 12 not provided - without pre cut  
REF 590.9880



### POTELET PL XE PM

Aluminium post - Height 2,20m  
- RAL colour aluminium 9006 - Ground plate mounting with 3 rawl plugs Ø 12 not provided - with a pre cut for small XE intercom unit  
REF 590.9820

### POTELET PL XE GM

Aluminium post - Height 2,20m  
- RAL colour aluminium 9006 - Ground plate mounting with 3 rawl plugs Ø 12 not provided - with a pre cut for big XE intercom unit  
REF 590.9830

### POTELET PL XE SANS DECOUPE

Aluminium post - Height 2,20m  
- RAL colour aluminium 9006 - Ground plate mounting with 3 rawl plugs Ø 12 not provided - without pre cut  
REF 590.9890



### POTELET VL/PL XE PM

Aluminium post - Height 2,20m  
- RAL colour aluminium 9006 - Ground plate mounting with 3 rawl plugs Ø 12 not provided - with 2 pre cuts for small XE intercom units  
REF 590.9840

### POTELET VL/PL XE GM

Aluminium post - Height 2,20m  
- RAL colour aluminium 9006 - Ground plate mounting with 3 rawl plugs Ø 12 not provided - with 2 pre cuts for big XE intercom units  
REF 590.9850

### POTELET VL CAP250

Aluminium post - Height 1,50m  
- RAL colour aluminium 9006 - Ground plate mounting with 3 rawl plugs Ø 12 not provided - with a pre cut for CAP 250  
REF 340.9800

### POTELET VL CAP350

Aluminium post - Height 1,50m  
- RAL colour aluminium 9006 - Ground plate mounting with 3 rawl plugs Ø 12 not provided - with a pre cut for CAP 350  
REF 340.9810

### POTELET PL CAP250

Aluminium post - Height 2,20m  
- RAL colour aluminium 9006 - Ground plate mounting with 3 rawl plugs Ø 12 not provided - with a pre cut for CAP 250  
REF 340.9820

### POTELET PL CAP350

Aluminium post - Height 2,20m  
- RAL colour aluminium 9006 - Ground plate mounting with 3 rawl plugs Ø 12 not provided - with a pre cut for CAP 350  
REF 340.9830

### POTELET VL/PL 2 CAP250

Aluminium post - Height 2,20m  
- RAL colour aluminium 9006 - Ground plate mounting with 3 rawl plugs Ø 12 not provided - with 2 pre cuts for CAP 250  
REF 340.9840

### POTELET VL/PL 2 CAP350

Aluminium post - Height 2,20m  
- RAL colour aluminium 9006 - Ground plate mounting with 3 rawl plugs Ø 12 not provided - with 2 pre cuts for CAP 350  
REF 340.9850

